

**This is
Sweden's
idea of an
expensive
toy.**





SAAB Sonett V4

This is a sports car that some men could go out of their minds over. It's a sports car that some men could do without. But won't.

It's a sports car some men won't try to justify to their wives. It's a sports car for those men who want an expensive toy. And don't mind admitting it.

Sonett V4 is that kind of sports car.

And a different kind than others because it brings true aerodynamic design to sports car. (That's not surprising. SAAB also builds all the supersonic jets used by the Swedish airforce.)

The result? The faster it goes, the tighter it hugs the road. The easier it is to handle.

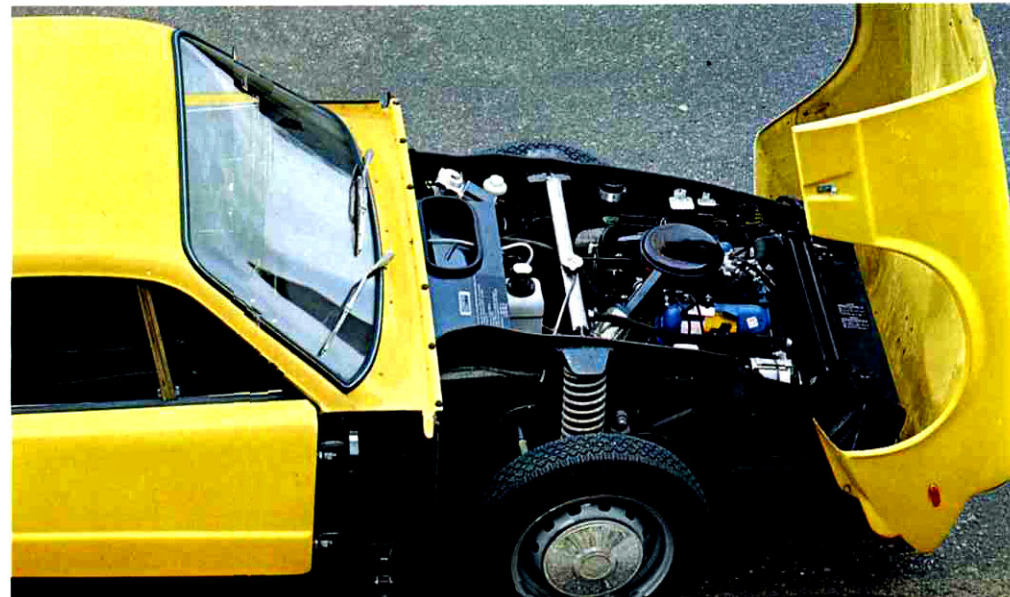
And it has front-wheel drive so you don't skid on curves, on hills, on ice, in rain or in snow.

Sonett V4 is the only sports car in its class with roll bars as standard equipment. There's a collapsible steering column. Under the fiber glass body there's a Swedish steel chassis. And the world's only dual diagonal braking system

Inside, you'll find things like one-piece Gran Turismo seats, molded to support the body all the way from knees to shoulders. Leather-trimmed steering wheel. Upholstered baggage compartment. (Little things like that.)

Powered by a 4-cycle, V-4 engine, Sonett V4 has so much pull you can go from zero to 50 in 9.1 seconds. And you can go well over 100, flat out.

If that's not too fast for you, come down to a SAAB showroom. Ask for the toy department.





Dimensions and Weights

Wheelbase 85 in.
Track front and rear 48 in.
Overall length approx. 149 in.
Overall width 57 in.
Height, with driver, approx. 46 in.
Dry weight approx. 1520 lbs.
Curb weight approx. 1700 lbs.
Gas tank holds 15.8 US gallons.

Engine

4 cylinder four-stroke. Water-cooled.
Piston displacement. 91.4 cu.in. (1498 cc).
Bore 3.54 in. (90 mm).
Stroke 2.32 in. (58.86 mm).
Max. output 73 b.h.p. (SAE) at 5000 rpm.,
65 b.h.p. (DIN) at 4700 rpm.
Max. torque 87 lb.ft. (SAE) at 2700 rpm.,
85 lb.ft. (DIN) at 2500 rpm.

Transmission

Front wheel drive. Free-wheel.
Single, dry-disc, cushion center clutch.
Universal joints of constant velocity type.
4 forward speeds, all synchromesh.
Overall gear ratios, engine to driving
wheels: 1st 16.23:1, 2nd 9.74:1, 3rd 6.05:1,
top 3.9:1, reverse 14.8:1.
Final drive ratio 4.67:1.
Road speed in top gear at 1000 rpm.
engine speed 18.1 mph.

Brakes

Caliper disc brakes on front wheels,
10.5 in. diameter.
8 in. drums on rear wheels.
Lockheed diagonal dual circuit hydraulic
system. Handbrake sets mechanically on
rear wheels.

Steering

Rack and pinion type.
Reduction 14:1.
Turning circle diameter (between walls)
31.5 ft.

Suspension

Coil springs and double acting telescopic
shock absorbers front and rear.
Independent front wheel suspension. (Trans-
verse wishbones.)
Rigid, U-shape, tubular rear axle.

Electrical system

12 volt battery.
Alternator type generator.

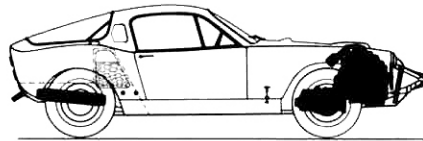
Wheels and Tires

15 in. wide rim wheels.
Sports car tires, with inner tubes, 155 x 15 in.

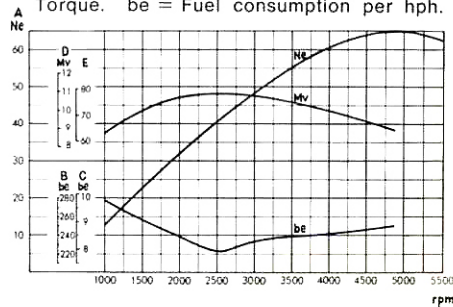
Performance

Top speed approx. 100 mph.
Acceleration from rest to 50 mph. in
9.1 seconds, and from 0 to 62 mph. (100 km/h)
in 12.5 seconds.

■ The manufacturer reserves the right
to make changes at any time and
without notice.



Performance curves A = Power hp. B =
g/hph. C = lb/hph. D = Torque kpm. E =
Torque lb.ft. Ne = Power, DIN. Mv =
Torque. be = Fuel consumption per hph.



PRODUCTION: TEMA, GBG / PRINT: ISACSONS, GBG. Enbart för spridning utomlands. F. 40066 40.000. 12.68. Printed in Sweden.

Saab Automobile Trollhättan

The purpose of this is only to show how brochures were
designed at the age when the Saab Sonett was a modern car.
The quality of this document is intentionally made "a bit low", just to
prevent reproduction.

Detta är en reproduktion gjord med tillstånd av
Saab Automobile Trollhättan

Syftet är endast att visa hur broschyrer såg ut på den tiden när
Saab Sonett var en modern bil.
Kvaliteten har medvetet hållits "låg" för att förhindra reproduktion.

